



Briarwood Drive, Leigh-on-Sea, Essex, SS9 4LA

Charming detached bungalow with 2 bedrooms located in a sought-after neighbourhood. The property boasts a lovely garden and off-street parking. Perfect for those seeking a peaceful and comfortable living space. Contact us today for a viewing!

Asking Price: £425,000

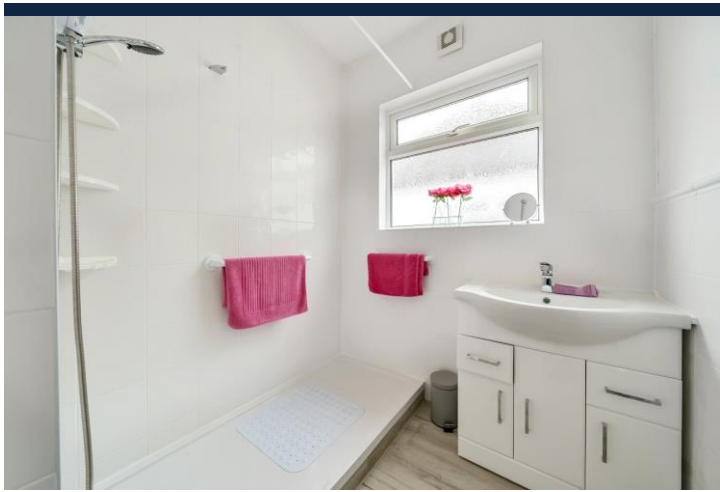


Property Description

Welcome to this charming detached bungalow, nestled in a peaceful neighbourhood. This property boasts two spacious bedrooms, ideal for a small family or those looking to downsize. The well-maintained garden provides a serene outdoor space, perfect for relaxation or entertaining guests. With off-street parking available, convenience is at your fingertips.

Step inside to discover a light-filled living area, complete with large windows that offer picturesque views of the surroundings. The kitchen is well-equipped with modern appliances and ample storage space, catering to all your culinary needs.

Located in a sought-after area, this bungalow offers a tranquil retreat while still being within easy reach of local amenities, schools, and transport links. Don't miss the opportunity to make this delightful property your new home. Contact us today to arrange a viewing.



Tenure

Council Tax Band

D

Viewing Arrangement

Contact Details

12 Brooke Estate
Lyon Road
Romford
RM1 2AT

brookings.co.uk

askus@brookings.co.uk

02085919088



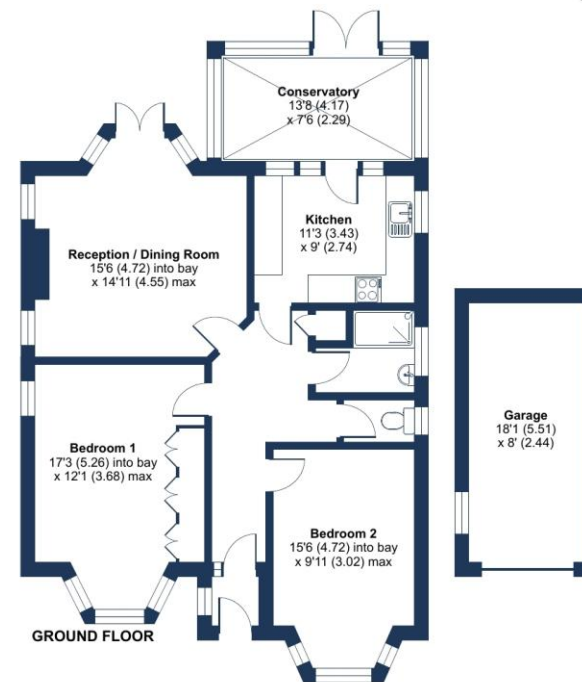
Briarwood Drive, Leigh-on-Sea, SS9

Approximate Area = 964 sq ft / 89.5 sq m

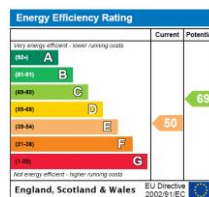
Garage = 152 sq ft / 14.1 sq m

Total = 1116 sq ft / 103.6 sq m

For identification only - Not to scale



Floor plan produced in accordance with RICS Property Measurement Standards incorporating International Property Measurement Standards (IPMS Residential). © nichecom 2024. Produced for Brookings Estate Agents. REF: 1168701



Agents Note: Whilst every care has been taken to prepare these sales particulars, they are for guidance purposes only. All measurements are approximate and for general guidance purposes only and whilst every care has been taken to ensure their accuracy, they should not be relied upon and potential buyers are advised to recheck the measurements